



The classic



With its vaulted ceiling, exposed beams and rustic hearth with wood burner-style fire, this traditional Wessex lodge would look as good on the ski slopes of the Alps as it does in the depths of the Devon countryside. It doesn't really matter what time of year you choose to get away from it all when you have a cosy, snug lodge to return to at the end of each day. As soon as you enter the Classic it gives you a hug and you'll find yourself curling up on the sofa with a good book and a cup of tea at every opportunity, ready to wind down and relax.

- Log lap cladding as standard, alternatively upgrade to cladding of your choice
- 600mm soffit overhang with bulkhead lights
- Tall, wide windows to dining area on front elevation to complement the French doors
- Painted vaulted V groove board ceiling to living space and kitchen with exposed centre beam



The Classic is a favourite of many and is at the very core of our lodge range. Therefore we felt any new developments we introduced must enhance, improve and maintain the integrity of this ever popular home. On entering through large French doors, the spacious interior immediately evokes a feeling of warmth and welcome. The new interior design blends a rich colour palette and the painted vaulted V groove ceiling and large windows accentuate the feeling of space in the lounge and dining areas.

- French doors to lounge
- New model wood burner-style fire and hearth
- Light oak finish internal doors
- Television points in lounge, master bedroom and twin bedroom



The tastefully designed kitchen provides plenty of cupboard space in addition to accommodating the full complement of kitchen appliances.

A particular feature of this classic kitchen is the 900mm wide worktop between the kitchen and dining area which creates a breakfast bar in addition to providing a hugely practical work area - making holiday living hassle free.

- Newly designed U shaped kitchen with wide peninsular incorporating bar seating area
- Utility room and walk-in cloaks cupboard in 2 bed 40 x 20ft lodges
- New deep linen finish modern sink



Elegant, light and inviting, the king-size master bedroom continues the theme of space and tranquillity. This room will provide a haven on a warm summer night or a cold winter evening. In the two bedroom layout the master bedroom benefits from his and hers wardrobes and an en-suite with large walk-in shower. The second bedroom supplied in a twin format as standard can equally become another double. The bathroom and en-suite are well equipped with modern attractive fixtures and fittings.

- En-suite with 1200mm shower
- Upgraded bathroom and en-suite
- Upgraded bathroom fittings and sanitary ware

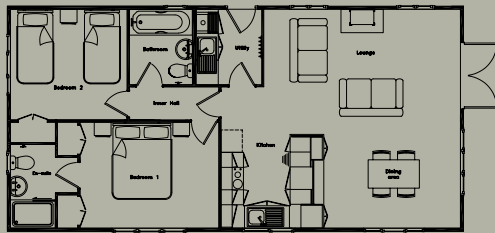
Specification - The standard specification of all Wessex holiday lodges is impressive and reflects the importance we place on quality, functionality and concern for the environment. Each individual lodge, however, has a number of additional features as standard that give it its special identity. The Classic Lodge offers the following:

Floor Plans - The Classic has a choice of six standard floor plans in sizes ranging from 34 x 20ft to 40 x 20ft. A selection of layouts are shown below, with the full range available on our website **(other sizes and layouts can be designed by request)**:

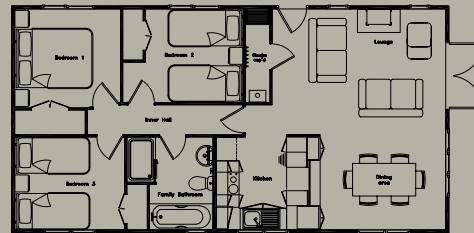
- 34 x 20ft 3 Bed
- 36 x 20ft 2 Bed en-suite
- 38 x 20ft 2 Bed en-suite
- 38 x 20ft 3 Bed
- 40 x 20ft 2 Bed en-suite with utility
- 40 x 20ft 3 Bed en-suite with utility



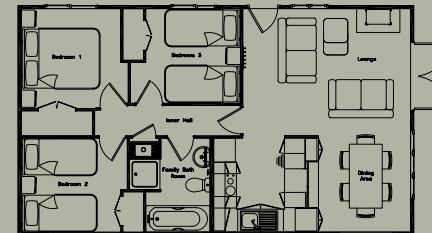
Overall size: 40 x 20ft. 3 Bed en-suite with utility
Gross Floor Area: 790sqft (73.44sqm)



Overall size: 40 x 20ft. 2 Bed en-suite with utility
Gross Floor Area: 790sqft (73.44sqm)



Overall size: 38 x 20ft. 3 Bed with family bathroom
Gross Floor Area: 751sqft (69.77sqm)



Overall size: 34 x 20ft. 3 Bed with family bathroom
Gross Floor Area: 672sqft (62.43sqm)



Exterior Features

- Log lap cladding
- 600mm soffit overhang with bulkhead lights
- French doors to lounge area with satin silver exterior handles
- Tall, wide windows to dining area on front elevation to complement the French doors
- Light oak exterior finish to all windows with white interiors

Interior Features

- Painted vaulted V groove board ceiling to living space and kitchen with exposed centre beam
- Utility room including cloaks hanging in 2 and 3 bed 40 x 20ft lodges
- En-suite with 1200mm shower (not all models)
- Television points in lounge, master bedroom and twin bedroom(s)
- Upgraded bathroom fittings and sanitary ware
- New U shaped designed kitchen with bar area and dining to the side
- New model wood burner-style fire and hearth
- New deeper linen finish kitchen sink
- Chrome down lighters to hall, en-suite and bathroom

Optional Upgrades

- Canexel exterior cladding or alternative cladding of your choice
- Gable over side entrance
- Integrated kitchen appliances:
 - Tall fridge/freezer
 - Washing machine or washer/dryer
 - Dishwasher
- Colour co-ordinated bed throws, duvet covers and scatter cushions
- Light oak finish internal doors
- 2 x kitchen bar stools

DISCLAIMER - Due to our policy of continual improvement occasional changes to specification and layout may occur. The photographs shown in this brochure are for illustrative purposes only and are not intended to form part of a contractual agreement. Interior design images act as a guide only and interiors may vary from those shown. Some photographs may include optional upgrades. To avoid confusion or disappointment, please discuss your precise requirements with a member of our sales team by calling 01258 860455 – they are there to help you.