



# The contemporary



The new exterior design is unmistakably contemporary giving emphasis to maximum glazed area, whilst affording great holiday practicality with two sets of sliding doors. The door and window frames can be to your choice of RAL Classic colours. The glazing is complemented with a wide (600mm) soffit overhead incorporating feature down lighting. The striking newly designed interior combines high style with luxury accommodation with fully fitted appliances as standard.

It is a particular feature of the Contemporary that it has such a strong linear design style yet provides excellent family practicality and space. Wherever it is found, this spacious lodge with it's clean uncomplicated lines and sensitive exterior finish will grace it's surroundings.

- Log lap cladding as standard, alternatively upgrade to the cladding of your choice
- Larger sliding doors to lounge area
- Tall, wide window to dining area on front elevation
- Uncomplicated clean lines and sensitive exterior finish



The new Contemporary takes even more advantage of natural light with large sliding doors, with additional windows above. The kitchen area is distinguished from the living area by dramatic exposed wooden beams which create delineation without impeding the interaction between the spaces. Beautiful pendant lights hanging from the vaulted ceiling are complemented by spot lighting mounted on the timber beams to create both versatile and great lighting ambience.

- Vaulted, painted plasterboard ceiling throughout
- Exposed wooden beam feature
- Updated new style interior
- Television points in lounge, master bedroom and twin bedroom
- Extensive cloak cupboard storage



The vaulted ceiling which works to such good affect in the living area has now been carried through the rest of the home. The bright, airy kitchen spans the full width of the home allowing for more space in the living area. The fully equipped modern kitchen has all the conveniences to hand. The only appliance that is optional is the integrated microwave and is a personal choice for many.

- The new style kitchen spans the full width of the home
- Single high-level electric oven with hob and extractor
- Integrated washing machine and dishwasher
- Freestanding fridge/freezer
- Feature truss and timber beam detail



Immediately upon entering the master bedroom you have a feeling of opulence. From the three windows that frame the bed and the feature wallpaper; to the full wall of sliding glass doors leading into the en-suite hiding two wardrobes, you cannot fail to be impressed. At night from the living area the high triangle windows provide mellow indirect light that casts a warm glow emphasising the beauty of this sumptuous master bedroom.

Entering the en-suite you are greeted with mirrored walls either side of the walkway and modern fixtures and fittings. The beautiful washstand has been surrounded by three mirrored walls ideal for pampering yourselves. The bathroom has new modern sanitary ware and shiny chrome taps giving it a clean crisp feel.

- Sumptuous master bedroom
- Full and half height tiling in en-suite and bathroom
- 1200mm shower to en-suite
- Down lighters to inner hall, master bedroom, twin bedroom, en-suite and bathroom

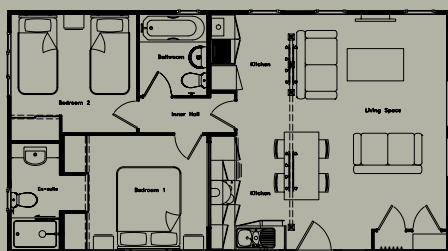
**Specification** - The standard specification of all Wessex holiday lodges is impressive and reflects the importance we place on quality, functionality and concern for the environment. Each individual lodge, however, has a number of additional features as standard that give it its special identity. The Contemporary Lodge offers the following:

**Floor Plans** - The Contemporary has a choice of six standard floor plans in sizes ranging from 36 x 20ft to 42 x 20ft. A selection of layouts are shown below, with the full range available on our website (**other sizes and layouts can be designed by request**):

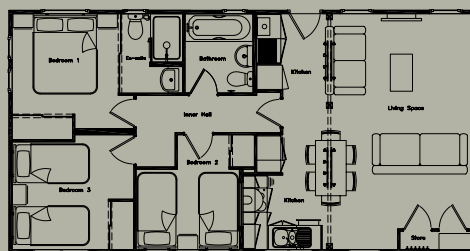
- 36 x 20ft 2 Bed en-suite
- 36 x 20ft 3 Bed en-suite
- 38 x 20ft 2 Bed en-suite
- 38 x 20ft 3 Bed en-suite
- 42 x 20ft 2 Bed with utility
- 42 x 20ft 3 Bed with utility



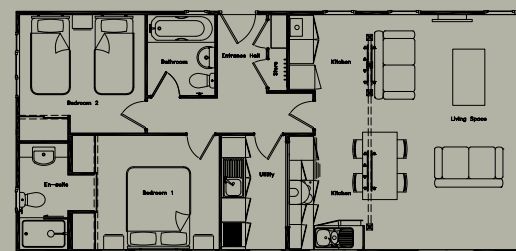
Overall size: 42 x 20ft. 3 Bed en-suite with utility  
Gross Floor Area: 830sqft (77.12sqm)



Overall size: 36 x 20ft. 2 Bed en-suite  
Gross Floor Area: 712sqft (66.10sqm)



Overall size: 38 x 20ft. 3 Bed en-suite  
Gross Floor Area: 751sqft (69.80sqm)



Overall size: 42 x 20ft. 2 Bed en-suite with utility  
Gross Floor Area: 830sqft (77.12sqm)



### Exterior Features

- Choice of exterior cladding
- 600mm soffit overhang with integrated down lighters
- Sliding doors to lounge area with satin silver exterior handles
- Distinctive colour co-ordinated feature frame to front gable

### Interior Features

- Vaulted ceilings throughout
- Cloaks cupboard with useful airing shelving
- Single high level electric oven with hob and extractor
- Integrated washing machine and dishwasher
- Feature exposed truss and beam detail
- Full and half height tiling in en-suite and bathroom
- 1200mm shower to en-suite
- Television points in lounge, master bedroom and twin bedroom
- Down lighters to inner hall, master bedroom, twin bedroom(s), en-suite and bathroom
- Practical cloak cupboard to living area or hall (as applicable)

### Optional Upgrades

- Canexel exterior cladding
- Gable over side entrance
- Washer/dryer
- Integrated microwave with oven and grill
- Colour co-ordinated bed throws, duvet covers and scatter cushions

DISCLAIMER - Due to our policy of continual improvement occasional changes to specification and layout may occur. The photographs shown in this brochure are for illustrative purposes only and are not intended to form part of a contractual agreement. Interior design images act as a guide only and interiors may vary from those shown. Some photographs may include optional upgrades. To avoid confusion or disappointment, please discuss your precise requirements with a member of our sales team by calling 01258 860455 – they are there to help you.