



The coachhouse



If you thought luxury lodge living was all about size, then think again. The single format Coachhouse Lodge blends beautifully into any leisure environment without imposing itself on the surroundings and still manages to provide spacious and contemporary holiday living. Available in both 2 and 3 bedroom options with 13, 14 and 16ft widths. The featured 16 x 40ft model illustrates the flexibility of the Coachhouse range providing twin style accommodation when space is at a premium.

- Timber log lap cladding with vertical and horizontal cladding detail to angled front elevation
- French doors with window detail above to angled front elevation
- Option of four tall windows to living area



Thoughtful design, stylish interior décor and quality furnishings and fittings will tempt even the most ardent outward bound types to stay back at base. This is a lodge with attitude, designed for people who love and respect the great outdoors but who still want to return at the end of a days cycling or trekking to a lodge that gives them all the comforts of home.

- Vaulted ceiling to lounge/diner with painted tongue and groove and centre beam
- Wide wooden blinds to tall and side window in lounge
- Full length curtains to French doors and front aspect window
- Wall hung fireplace to lounge/ diner



The Coachhouse offers the choice of either open plan or closed kitchen depending on the layout you choose. The modern spacious kitchen is designed to accommodate the full range of appliances allowing you freedom of choice when specifying your kitchen. Even when the full compliment of appliances are specified there is still plenty of storage space and worktop area which has been thoughtfully designed for easy access and ease of use.

- Square arch between kitchen and living space in the 13 and 14ft layouts
- Modern kitchen with single electric oven, hob and extractor
- Plumbing for washing machine and dishwasher
- Optional free standing american style fridge/freezer



The master bedroom with its en-suite, spans the full width of the home creating generous space normally only associated with larger twin units. There is still enough room for wide bed-side tables and built-in wardrobes which together create good storage space. In addition to the well appointed en-suite the Coachhouse has a good sized family bathroom.

- Contemporary tiling to en-suite and bathroom
- Sliding mirrored wardrobe doors in bedrooms
- Generous en-suite and full size family bathroom

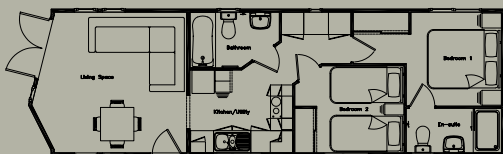
Specification - The standard specification of all Wessex holiday lodges is impressive and reflects the importance we place on quality, functionality and concern for the environment. Each individual lodge, however, has a number of additional features as standard that give it its special identity. The Coachhouse Lodge offers the following:

Floor Plans - The Coachhouse has a choice of five standard floor plans in sizes ranging from 42 x 13ft to 42 x 16ft. A selection of layouts are shown below, with the full range available on our website (**other sizes and layouts can be designed by request**):

- 42 x 13ft 2 Bed en-suite
- 42 x 14ft 2 Bed en-suite
- 42 x 16ft 2 Bed en-suite
- 44 x 13ft 2 Bed en-suite
- 44 x 14ft 2 Bed en-suite



Overall size: 42 x 16ft. 2 Bed en-suite
Gross Floor Area: 650sqft (60.30sqm)



Overall size: 42 x 13ft. 2 Bed en-suite
Gross Floor Area: 531sqft (49.31sqm)



Overall size: 42 x 14ft. 2 Bed en-suite
Gross Floor Area: 571sqft (53.02sqm)



Overall size: 44 x 13ft. 2 Bed en-suite
Gross Floor Area: 557sqft (51.72sqm)



Exterior Features

- Timber log lap cladding with vertical and horizontal cladding detail to angled front elevation
- French doors with window detail above to angled front elevation
- Four tall windows to living area
- Distinctive angled front elevation
- 13 and 14ft layouts available as single units

Interior Features

- Vaulted ceiling to lounge/diner with painted tongue and groove and centre beam
- Wide wooden blinds to tall and side windows in lounge
- Full length curtains to French doors and front aspect window
- Wall hung fireplace to lounge/diner
- Square arch between kitchen and living space
- Modern kitchen with single electric oven, hob and extractor
- Plumbing for washing machine and dishwasher
- Half height tiling to en-suite and bathroom with full height to en-suite shower area
- Sliding mirrored wardrobe doors to master bedroom
- Television points in lounge and master bedroom

Optional Upgrades

- Cedar log lap or Canexel exterior cladding
- 32" flat screen television with built-in DVD recorder and Freeview
- Freestanding fridge/freezer
- Integrated dishwasher and washer/dryer
- Additional glazing to front

DISCLAIMER - Due to our policy of continual improvement occasional changes to specification and layout may occur. The photographs shown in this brochure are for illustrative purposes only and are not intended to form part of a contractual agreement. Interior design images act as a guide only and interiors may vary from those shown. Some photographs may include optional upgrades. To avoid confusion or disappointment, please discuss your precise requirements with a member of our sales team by calling 01258 860455 – they are there to help you.