



The deckhouse



The distinguishing feature of the Deckhouse is its lack of compromise, even the inner hall has an airy spacious feel more reminiscent of apartment living. Floor to ceiling windows surround the dining area with the signature corner decking accessible by French doors, helping to blur the boundary between inside and outside.

Inspired architecture, thoughtful space planning and an unmistakable continental feel make the Deckhouse the ideal retreat for families with children or busy working couples wanting somewhere to wind down with friends after a hectic week.

- Canaxel cladding in a choice of 8 colours
- French doors with satin silver handles and contemporary top window detail
- Tall tilt and turn windows and feature fixed narrow windows to twin bedroom
- Great alfresco feel to kitchen dining area



The chic and roomy Deckhouse offers a continental atmosphere and our designers have created three stylish, contemporary colour schemes to complement it. A much-loved favourite with many of our customers, the Deckhouse has been designed for those who appreciate modern lodge living, with vaulted ceilings in the lounge, dining and kitchen areas; balanced with generous well proportioned bedrooms and facilities.

- Vaulted ceiling to living space and kitchen
- White oak veneer interior doors with satin steel handles
- Inset wall-mounted 37" plasma widescreen TV plus DVD/CD player



The Deckhouse is unique in offering a choice of two locations for the kitchen. Either at the front of the home affording a great view while using the kitchen and creating a snug mid lounge, or alternatively positioned in the middle of the home where full width views are then afforded to the lounge. Either way the Deckhouse is luxuriously appointed, finished in bold cheerful colours and has integrated appliances plus freestanding fridge/freezer.

- 900mm Range cooker
- Freestanding fridge/freezer and integrated dishwasher and washer/dryer
- Designer lighting and illuminated loftspace



One of the most appreciated features of the Deckhouse is the indulgent master bedroom and en-suite. The three quarter light windows adds to the light continental feel of the bedroom which follows through to the luxuriously appointed en-suite. The large designer shower cubicle still leaves space for the two (his and hers) sinks. There is an option of obscured glass partition and sliding door to the en-suite casting a romantic dappled light or a traditional partition wall if preferred. The full size bathroom has matching floor and wall tiles and benefits from an 1800 x 800mm bath. The light, bright twin bedroom has built in sliding wardrobe doors concealing a walk in space that can be fitted as a workstation if required.

- Extensive wall-to-wall built-in wardrobes with internal lighting and shelving
- Obscured glass en-suite partition and sliding glass door option
- Walk-in wardrobe with optional desk/mini office setup

Specification - The standard specification of all Wessex holiday lodges is impressive and reflects the importance we place on quality, functionality and concern for the environment. Each individual lodge, however, has a number of additional features as standard that give it its special identity. The Deckhouse offers the following:

Floor Plans - The Deckhouse has a choice of seven standard floor plans in sizes ranging from 42 x 16ft to 46 x 20ft. A selection of layouts are shown below, with the full range available on our website (**other sizes and layouts can be designed by request**):

- Centre lounge format:
 43 x 20ft 2 Bed en-suite
 45 x 20ft 2 Bed en-suite
 46 x 20ft 3 Bed en-suite
 Front lounge format:
 42 x 16ft 2 Bed en-suite
 43 x 20ft 2 Bed en-suite
 45 x 20ft 2 Bed en-suite
 46 x 20ft 3 Bed en-suite



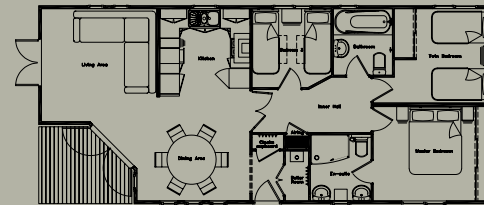
Overall size: 45 x 20ft. 2 Bed en-suite Front Lounge
 Gross Floor Area: 825sqft (76.6sqm)



Overall size: 42 x 16ft. 2 Bed en-suite Front Lounge
 Gross Floor Area: 653sqft (60.63sqm)



Overall size: 43 x 20ft. 2 Bed en-suite Centre Lounge
 Gross Floor Area: 785sqft (72.89sqm)



Overall size: 46 x 20ft. 3 Bed en-suite Front Lounge
 Gross Floor Area: 844sqft (78.39sqm)



Exterior Features

- Canexel cladding in a choice of colours
- French doors with satin silver handles and contemporary top window detail
- Tall windows
- Stylish fixed narrow windows to twin bedroom
- Fascias and soffits in Cherrywood or Light Oak UPVC
- Tanalised decking, verandah and steps
- Designer wall lights

Interior Features

- Vaulted ceiling to living space and kitchen
- White oak veneer interior doors with satin steel handles
- Wall-mounted 37" flat screen TV plus DVD/CD player
- 900mm Range cooker (Centre lounge only)
- Flame effect hole-in-the-wall fire
- Free-standing fridge/freezer
- Integrated dishwasher and washer/dryer
- Boiler room/wet wear cupboard with coat hooks
- Two 560mm pedestal hand basins to en-suite
- Designer lighting and illuminated loftspace

Optional Upgrades

- Extended verandah and balustrade
- Extended verandah lighting
- Galvanised rainwater goods
- Home cinema and surround sound system
- Glass partitions with sliding door to en-suite
- Artwork in selected rooms
- Lloyd Loom dining suite
- Retro-style 'Zerostress' sofas
- Computer station and office chair in walk-in wardrobe
- Smeg fridge/freezer
- Bed throws and scatter cushions

DISCLAIMER - Due to our policy of continual improvement occasional changes to specification and layout may occur. The photographs shown in this brochure are for illustrative purposes only and are not intended to form part of a contractual agreement. Interior design images act as a guide only and interiors may vary from those shown. Some photographs may include optional upgrades. To avoid confusion or disappointment, please discuss your precise requirements with a member of our sales team by calling 01258 860455 – they are there to help you.